



# 2012 Benchmarking Update

Romney Institute of Public Management  
Brigham Young University

Center for Public Policy & Administration  
University of Utah

The Utah League of Cities and Towns

---

# Agenda

- Data Basics – Sara McCormick
- Fiscal Health – Rex Facer
  - Resource Flows
  - Resource Stocks
  - Changes in Demand
- Fiscal Responses

# Data

- <https://www.utahcitydata.org/>
  - UT Forms
  - Census Data
  - Survey Data

**UTAH**  

---

**CITY**  

---

**DATA**

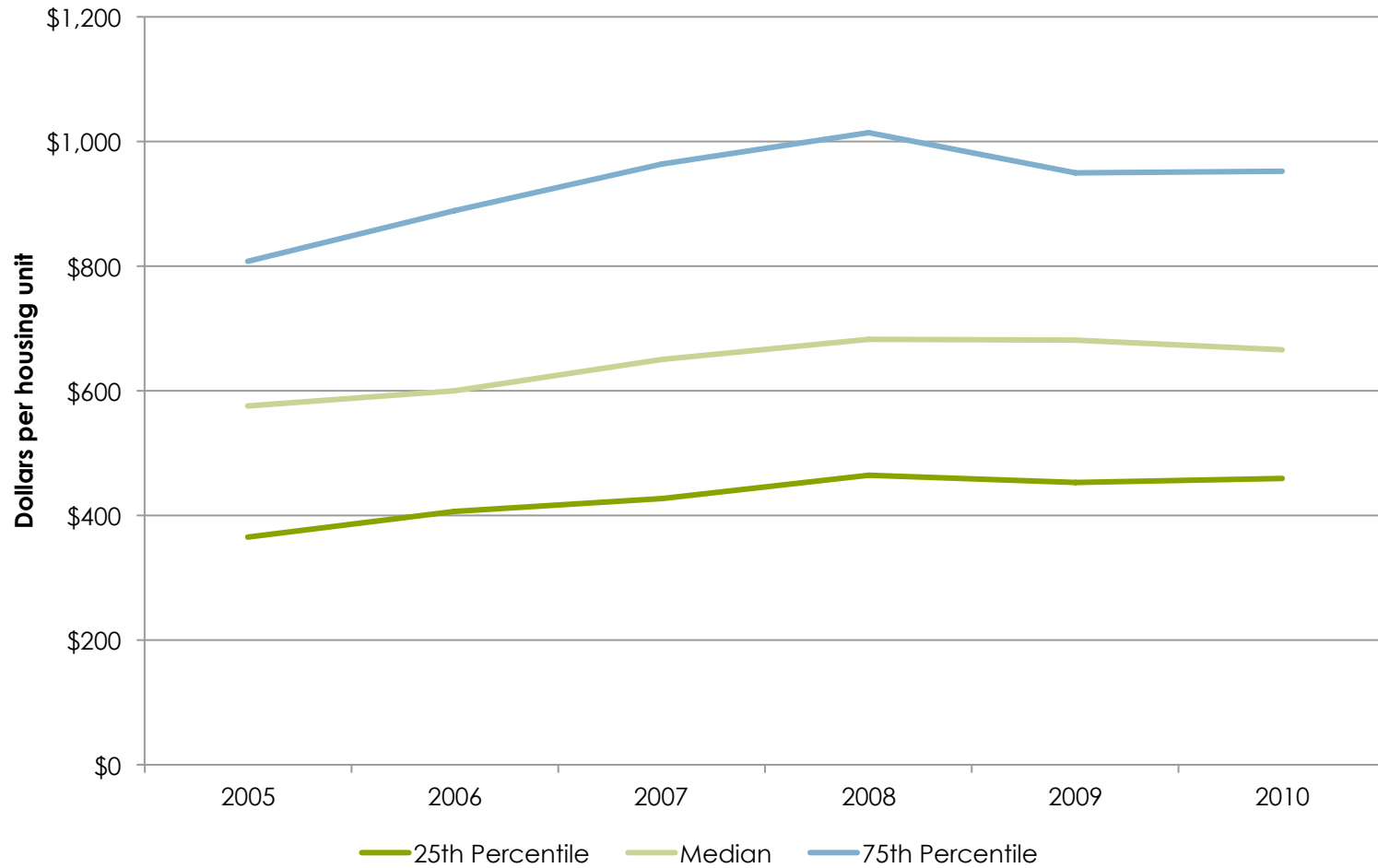
# Fiscal Health

- The ability of a city to provide services to residents is the foundation of a strong community
- 3 Factors impact a city's ability to provide services
  - The flow of resources available (revenue)
  - The stock of resources available to meet disruptions in the flow of resources or changes in demand
  - The service demands of the community

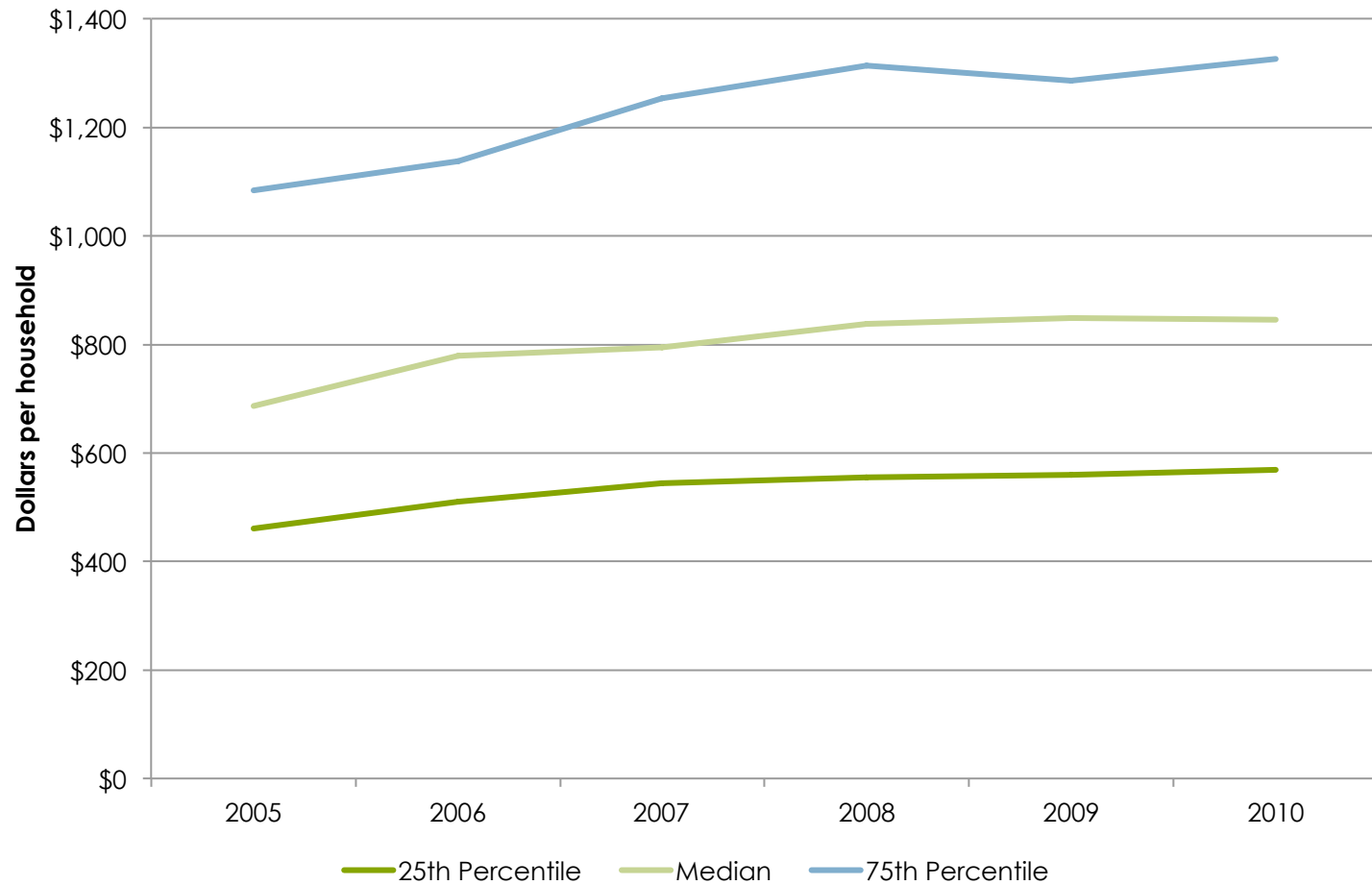
# Flow of Resources

- Ongoing Fees and Charges for Services per Housing Unit
- One-time Fees and Charges for Services per Housing Unit
- Intergovernmental revenue per Housing Unit
- Total Revenue per Housing Unit

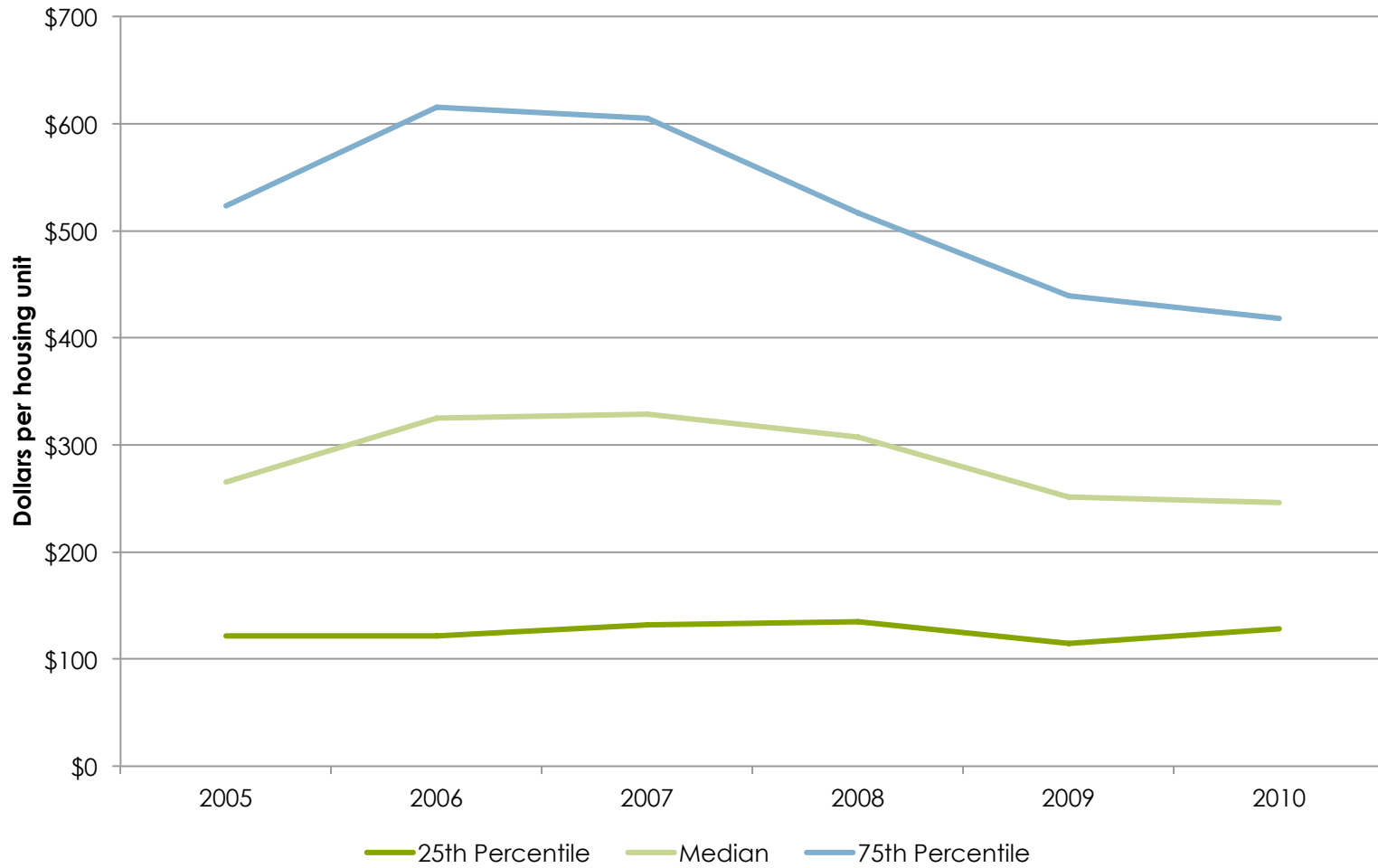
## Tax Revenue per Housing Unit



## On-going fees & charges per housing unit

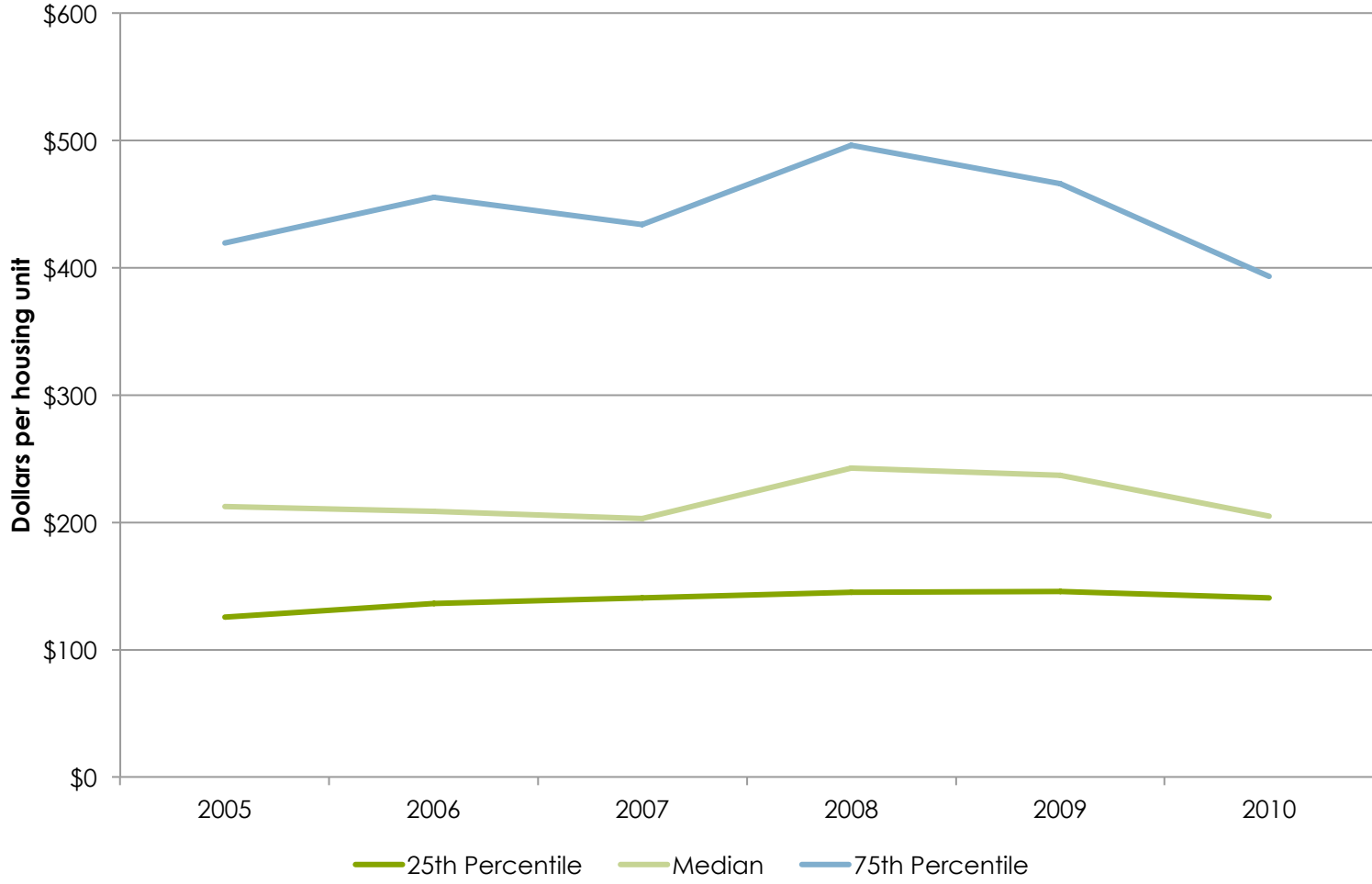


## One-time fees & charges per housing unit

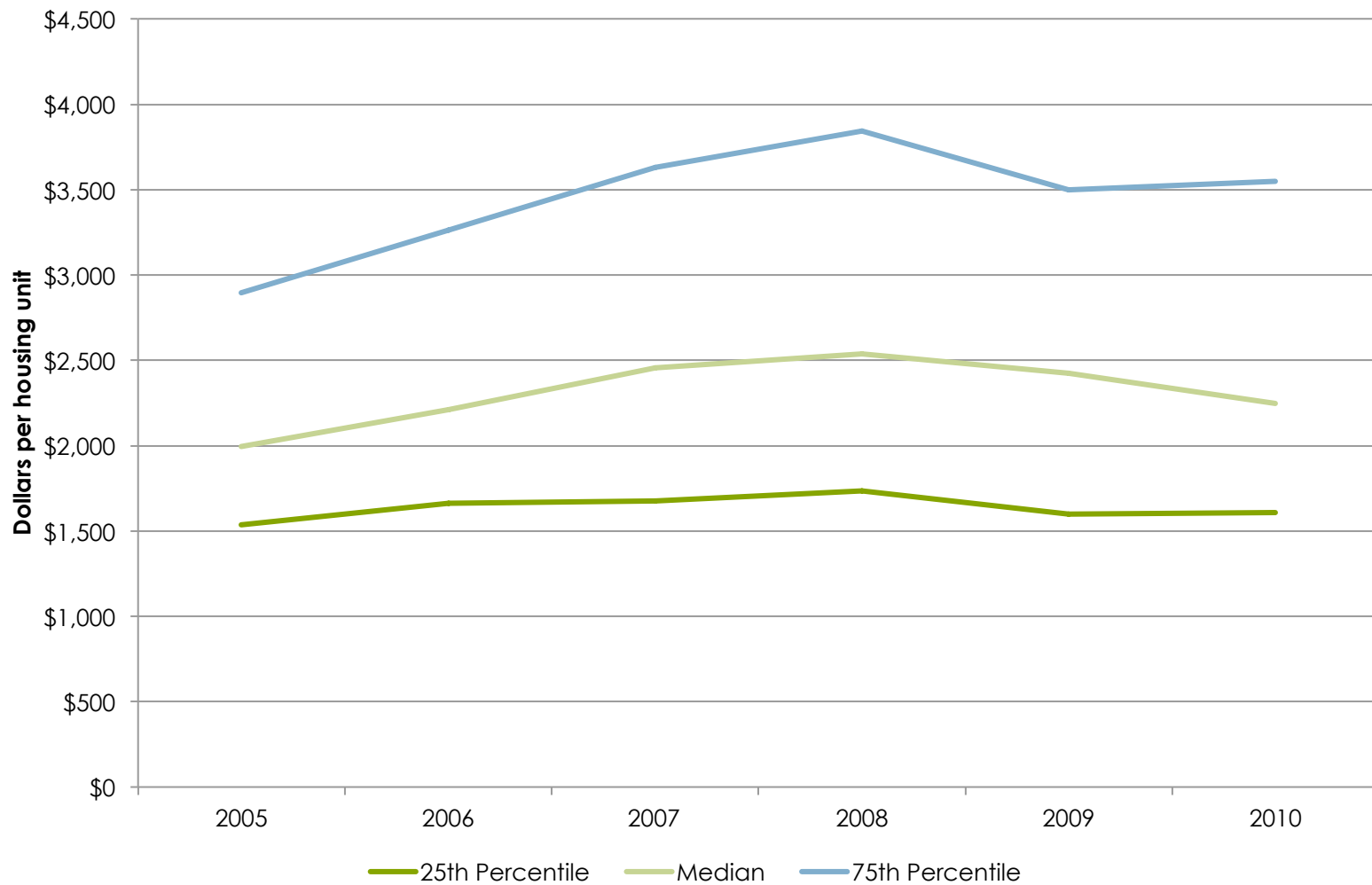




# All intergovernmental revenue per housing unit



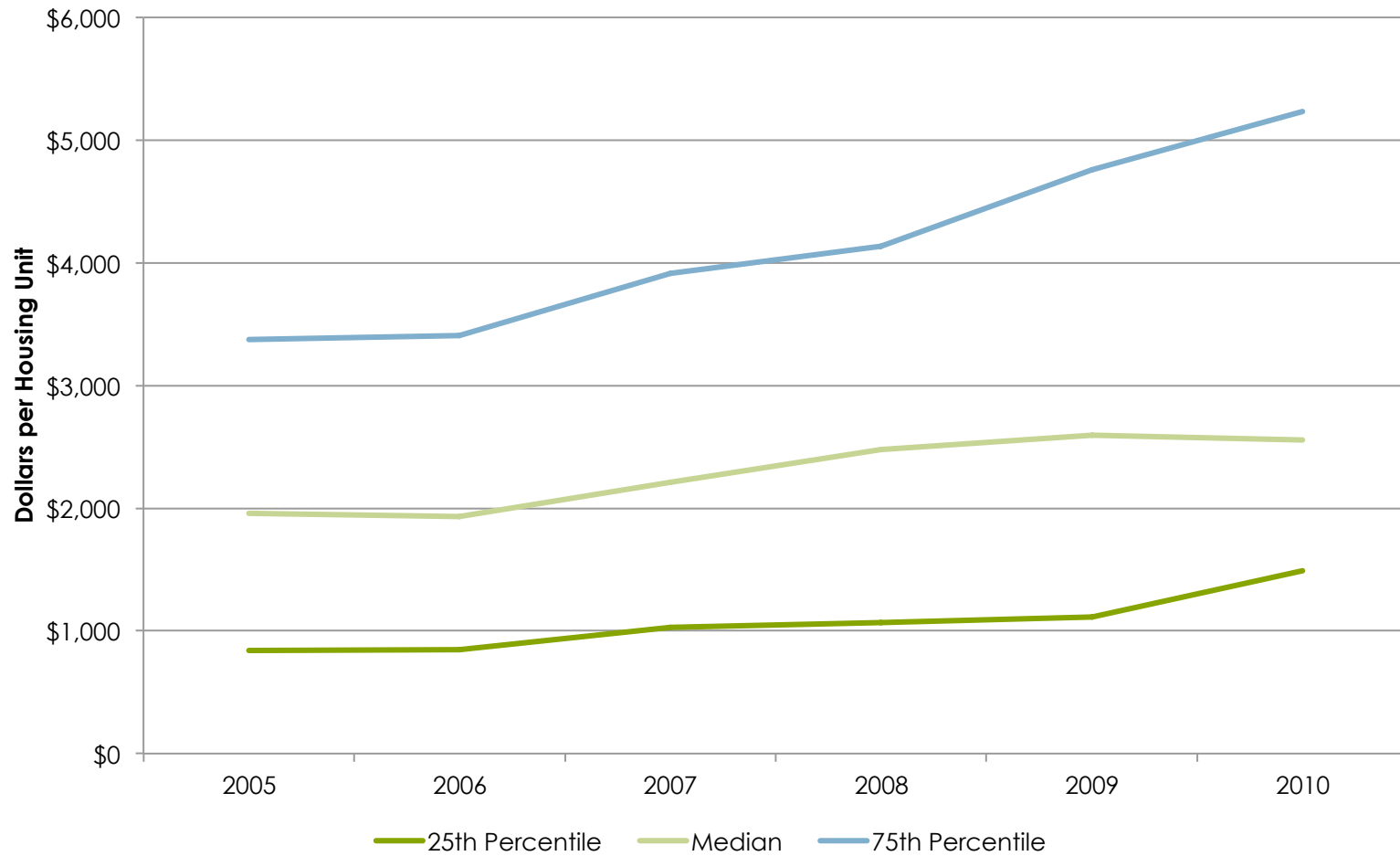
## Total revenue per housing unit



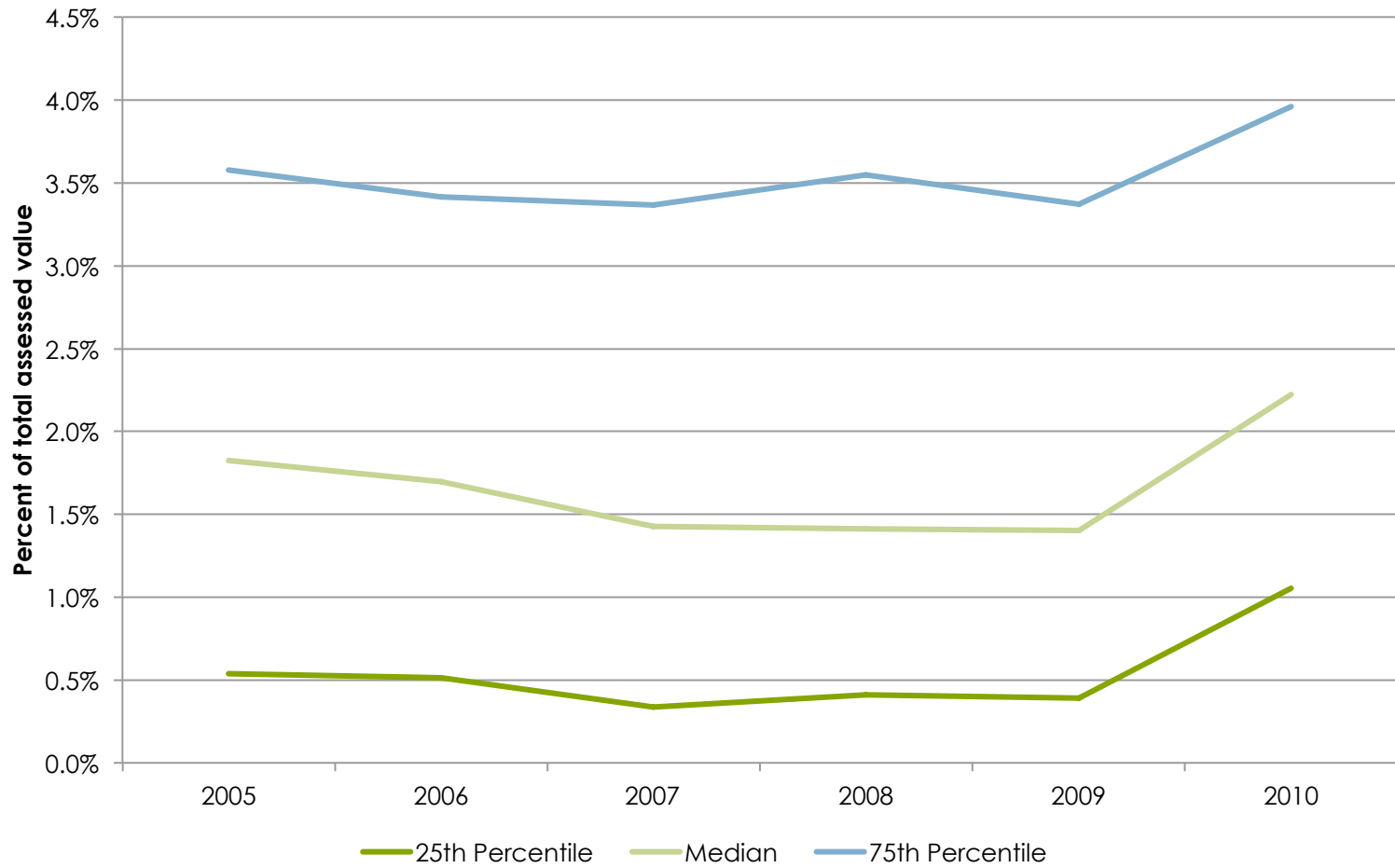
# Stock of Resources

- Debt levels
- Debt service

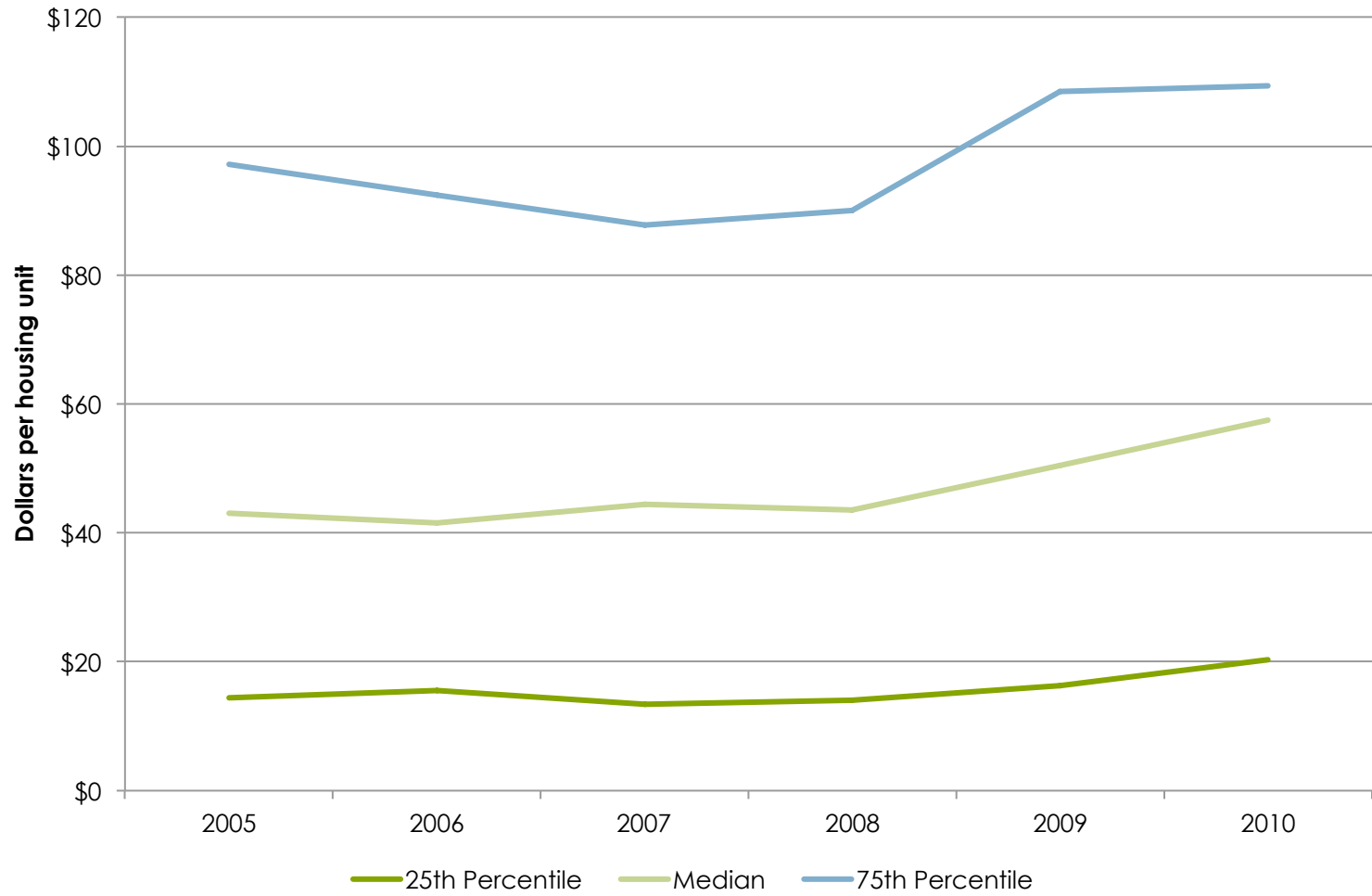
## Total Outstanding Debt per Housing Unit (End of Year)



## Total Debt Outstanding as Percentage of Total Assessed Property Value



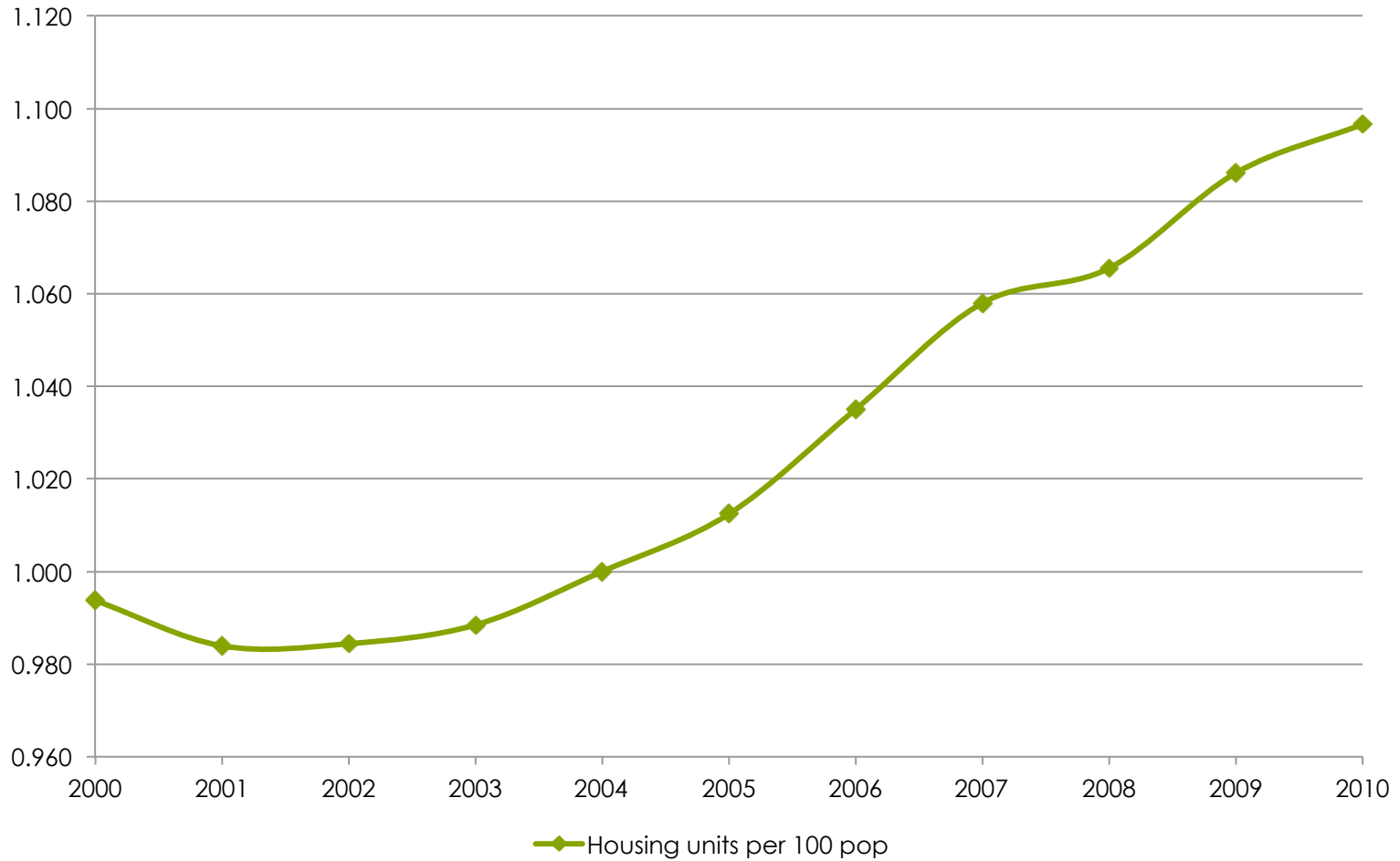
## Interest on Debt per Housing Unit



# Factors affecting demand

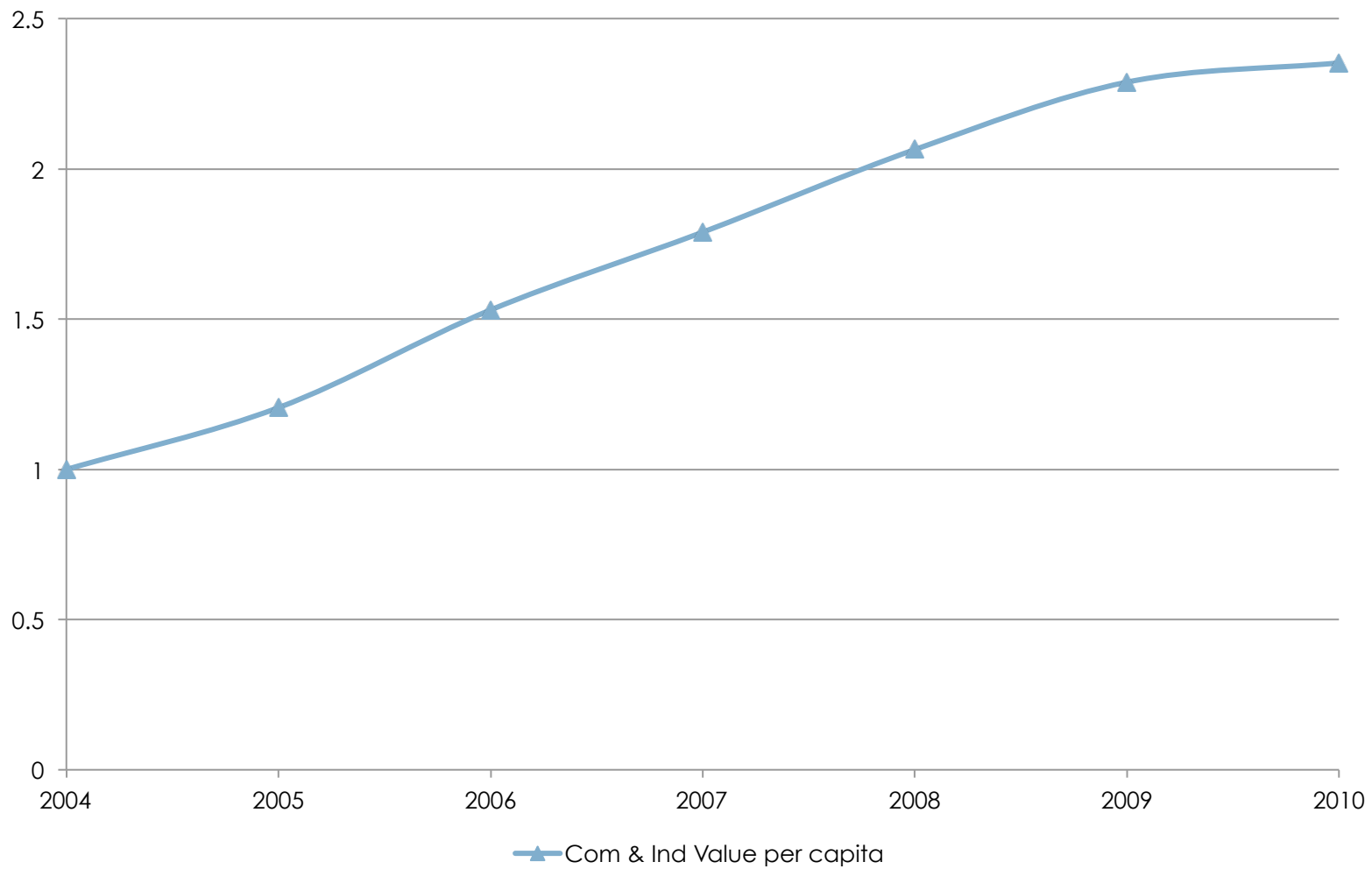
- Housing units
- Commercial and Industrial Property Value
- Residential Market Values
- Land Area

## Indexed Average Housing Units per 100 pop

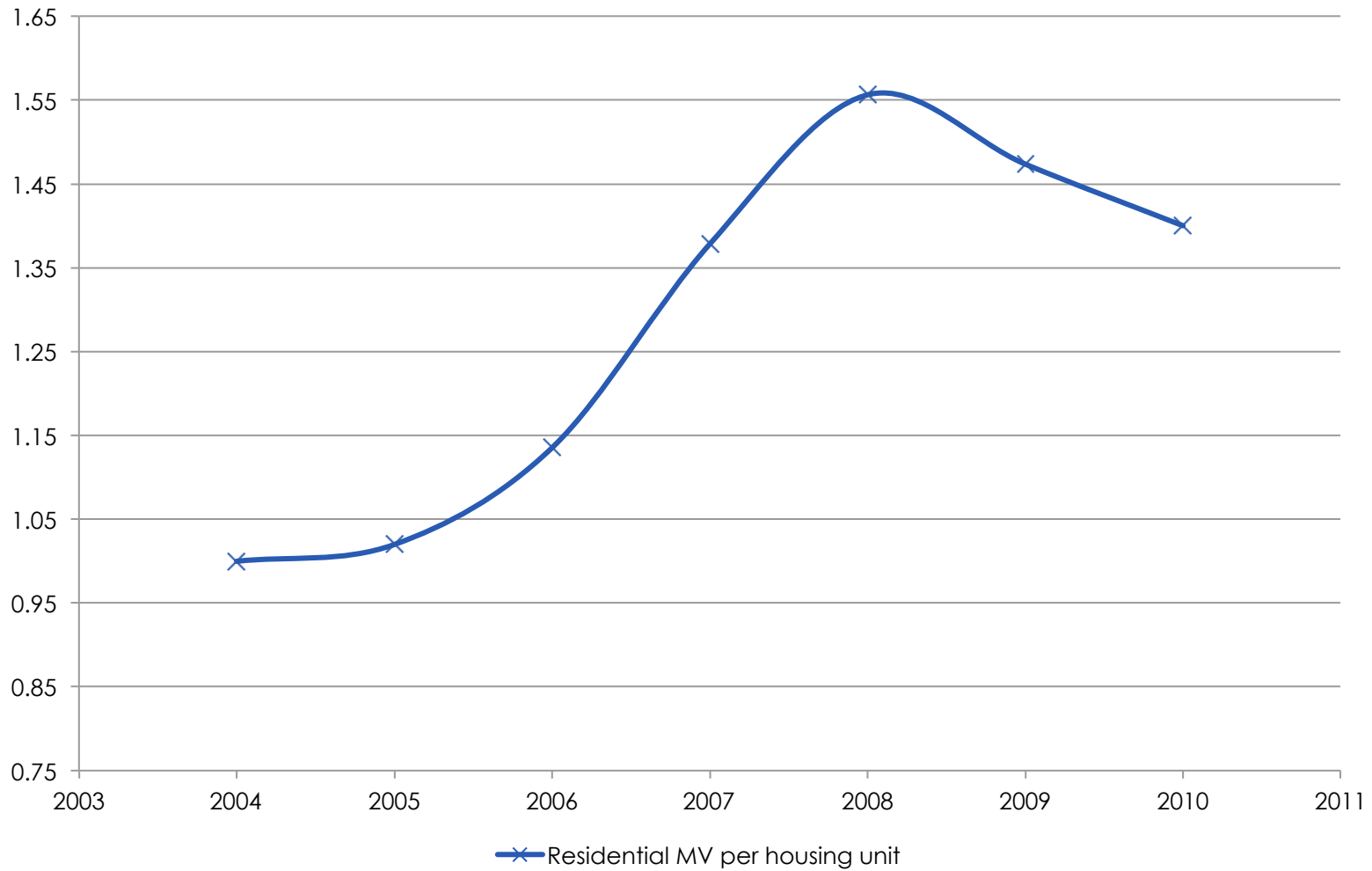




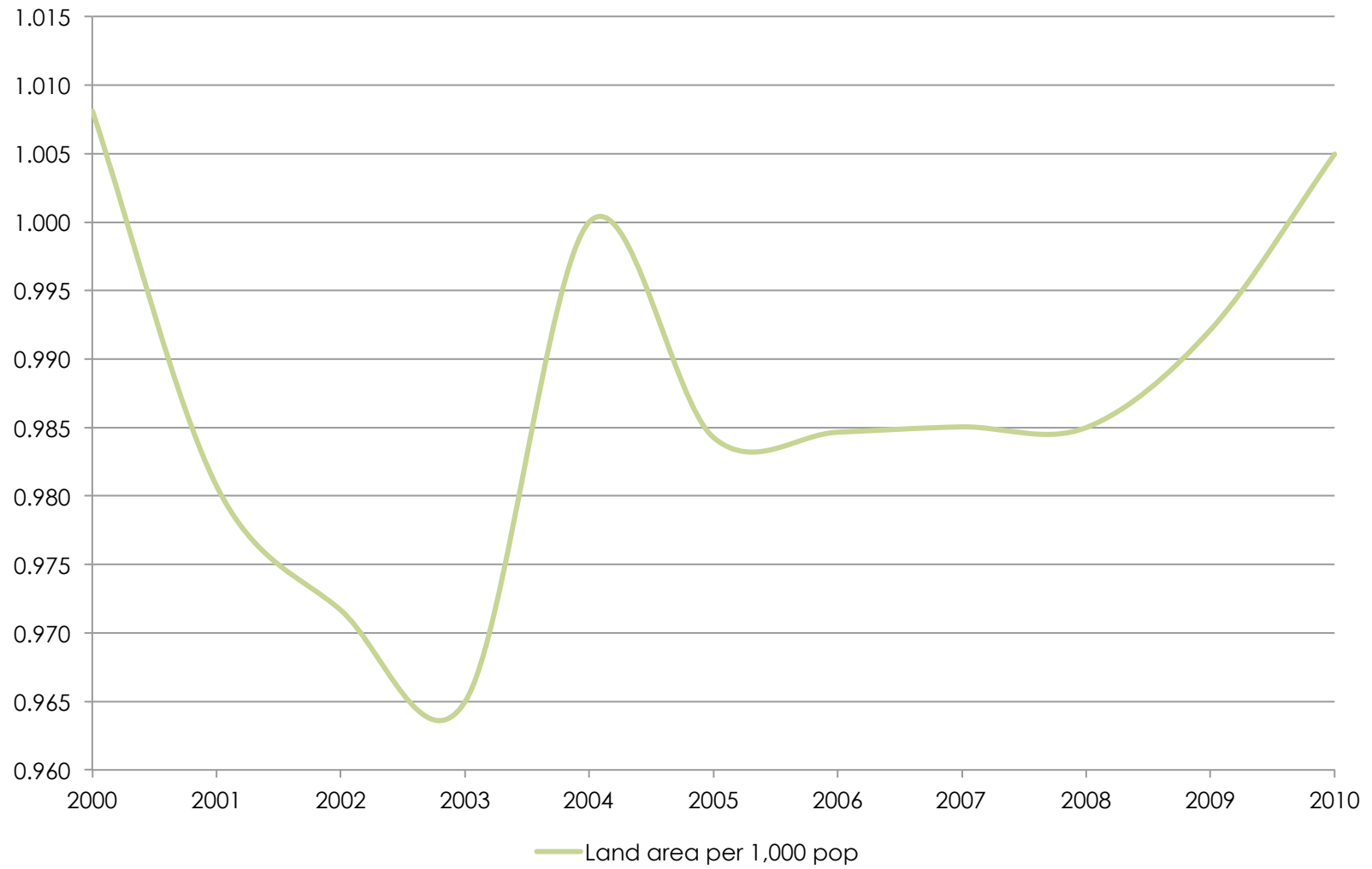
## Com & Ind Value per capita



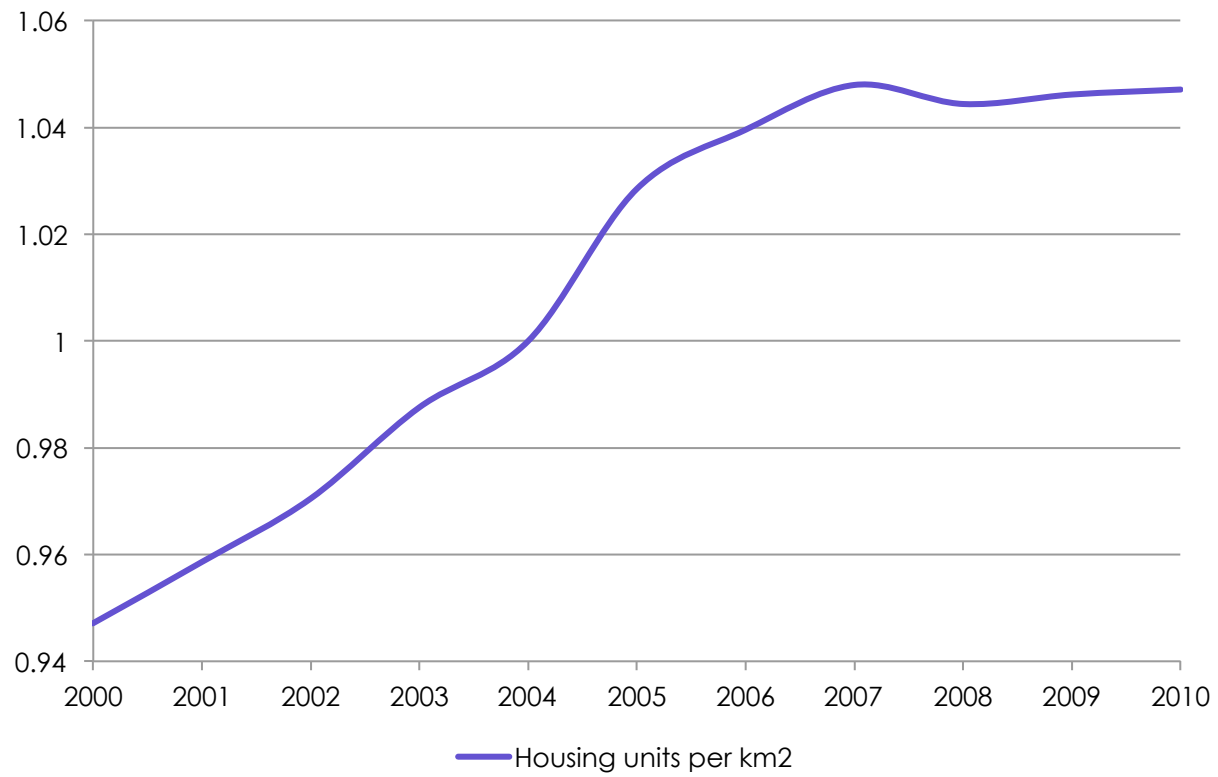
## Residential Market Value per Housing Unit



## Indexed Land area per 1,000 pop



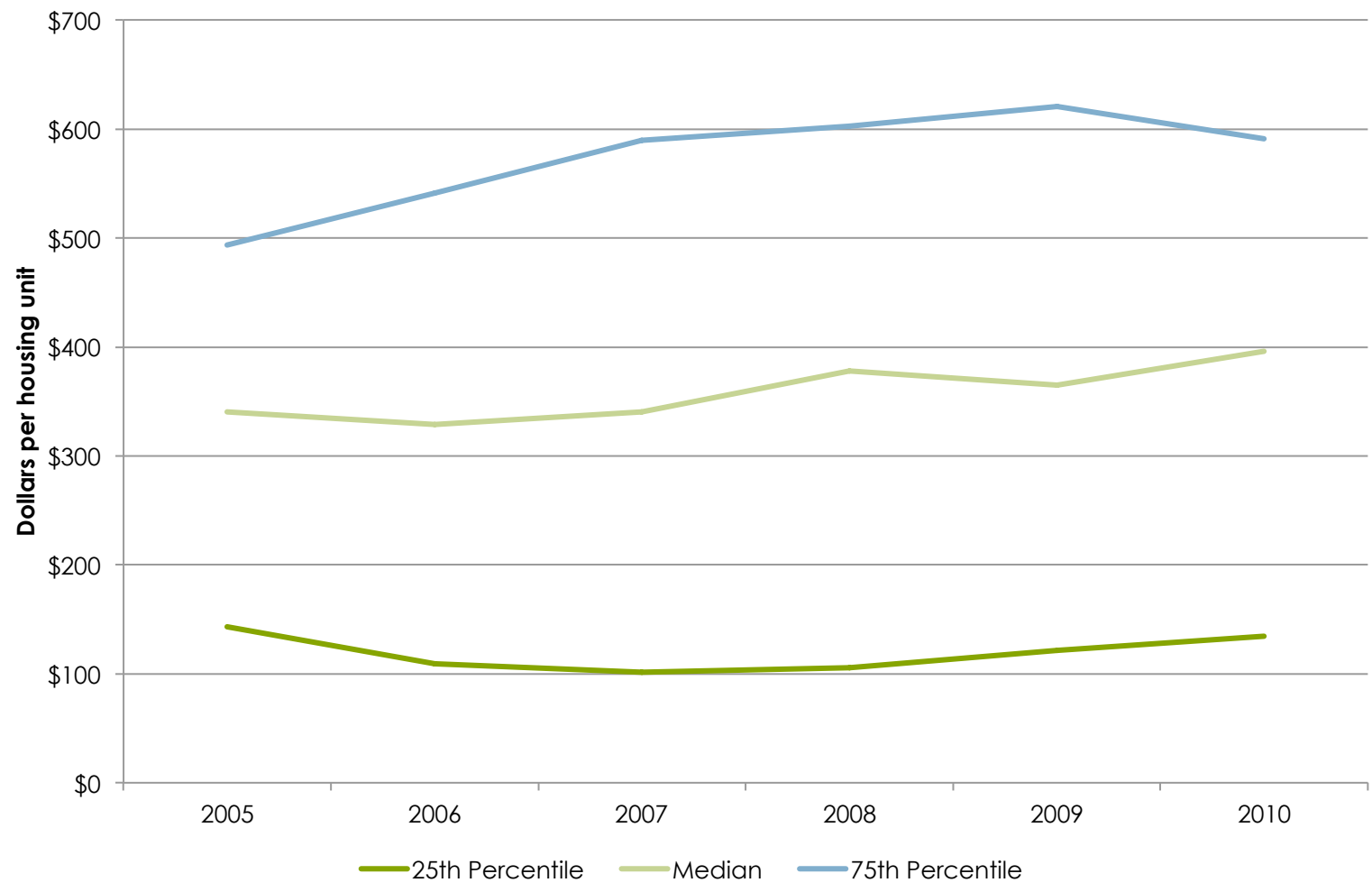
## Indexed Housing units per km<sup>2</sup>



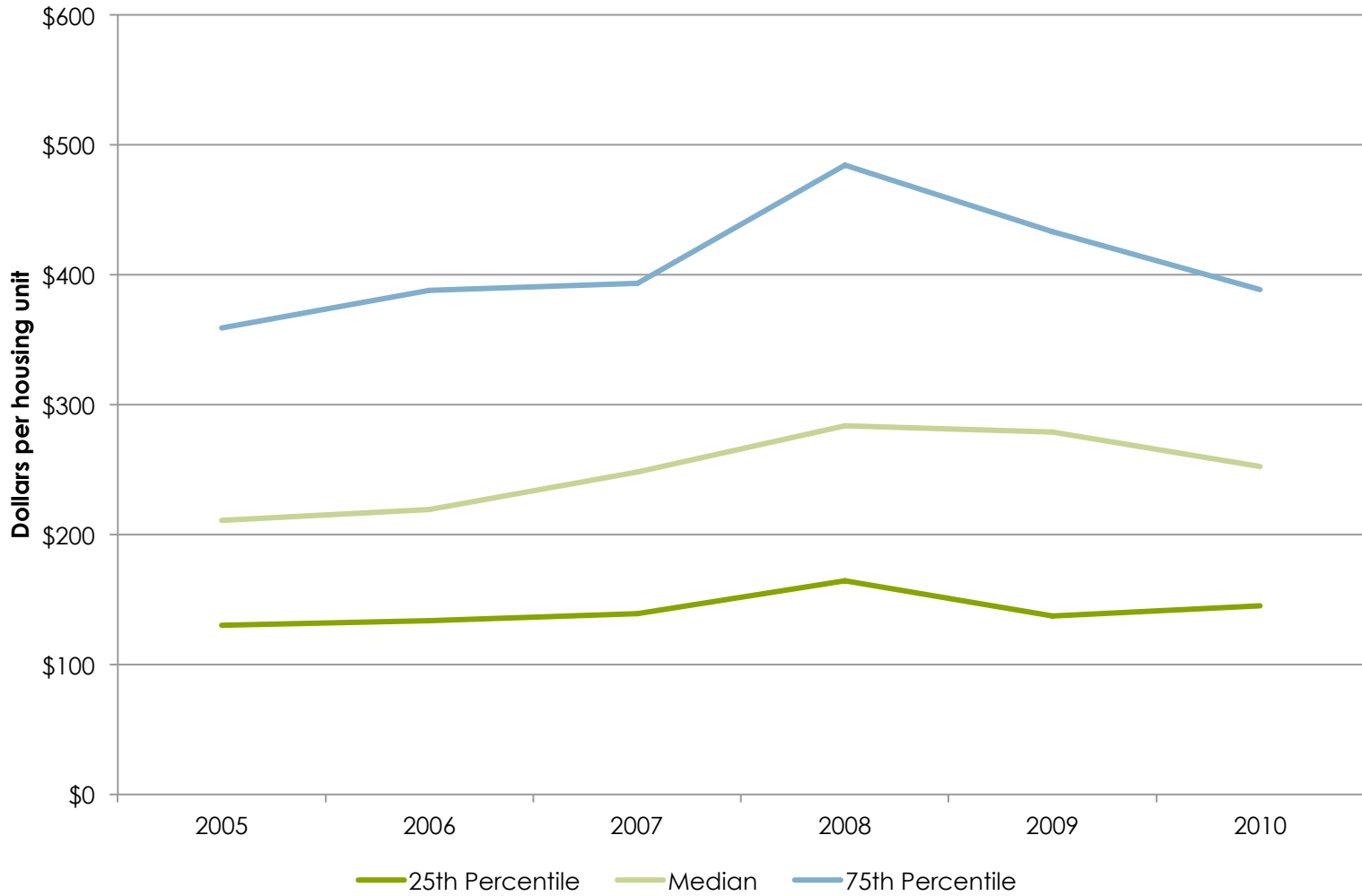
# Responses to Changing Fiscal Conditions

- Public Safety Expenditures
- Transportation
- Parks and Recreation
- Governmental Administration
- Utility Expenditures
- Total Expenditures

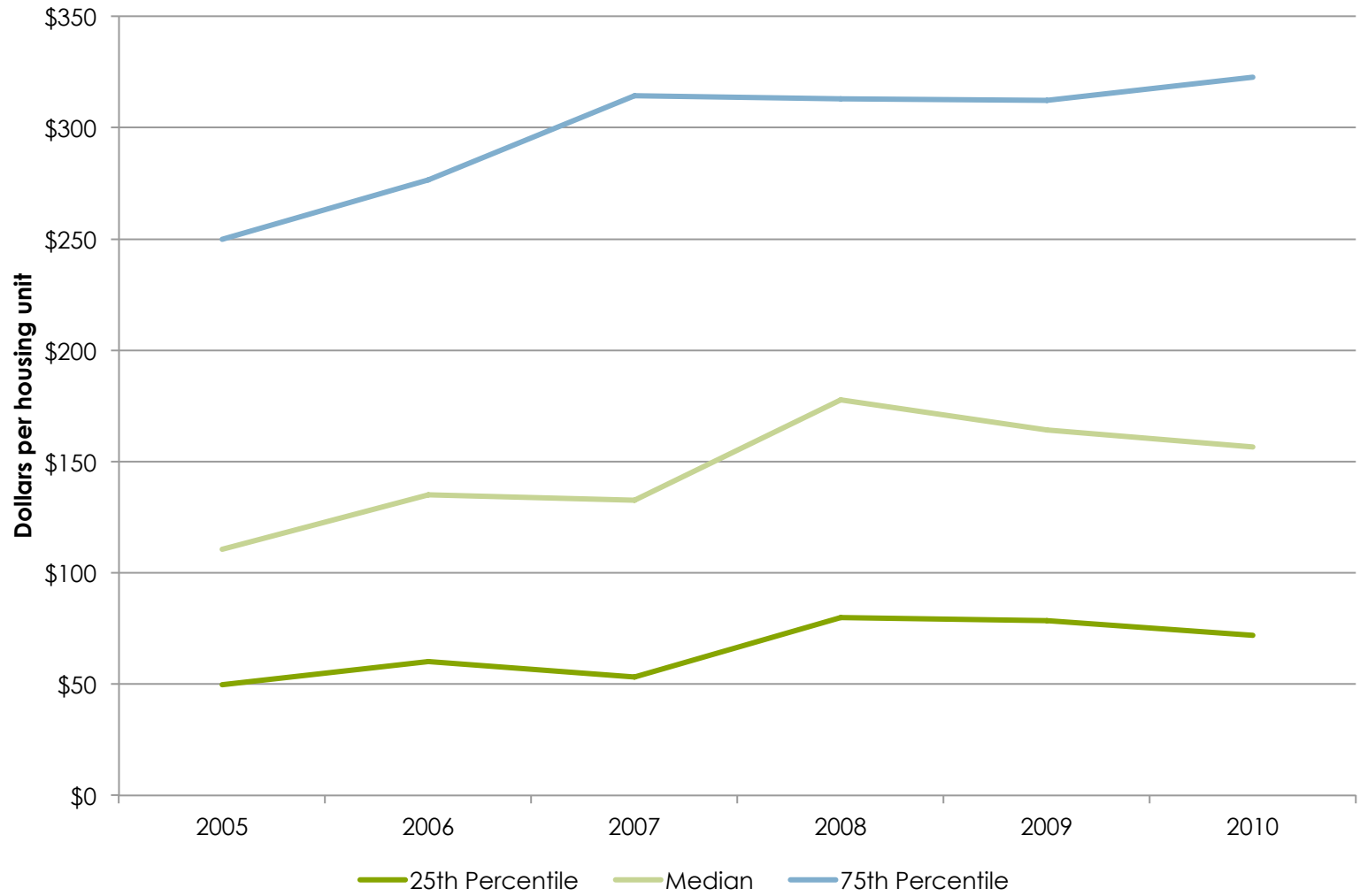
## Public Safety Expenditures per Housing Unit



## Transportation Expenditures per Housing Unit

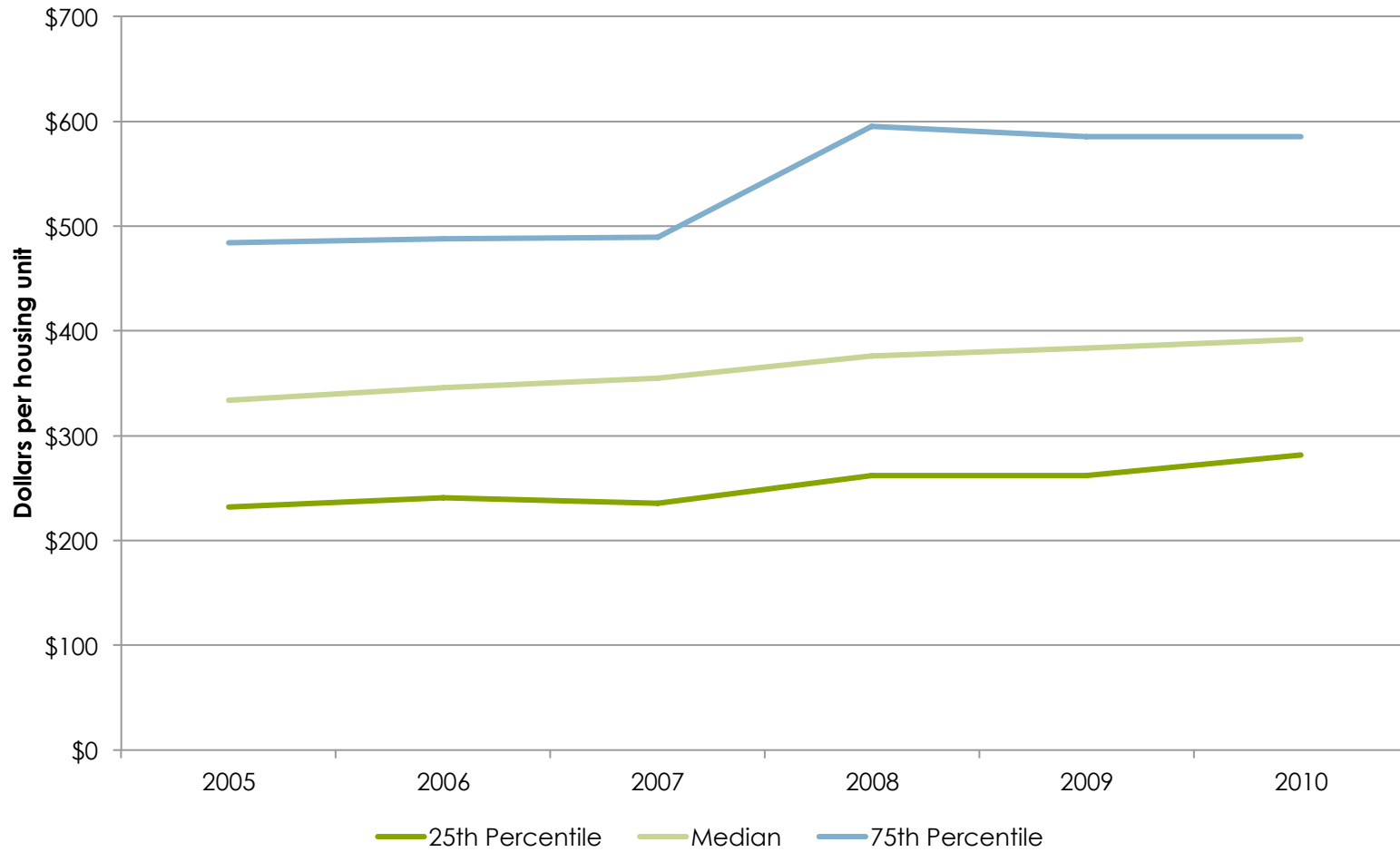


## Parks & Recreation Expenditures per Housing Unit

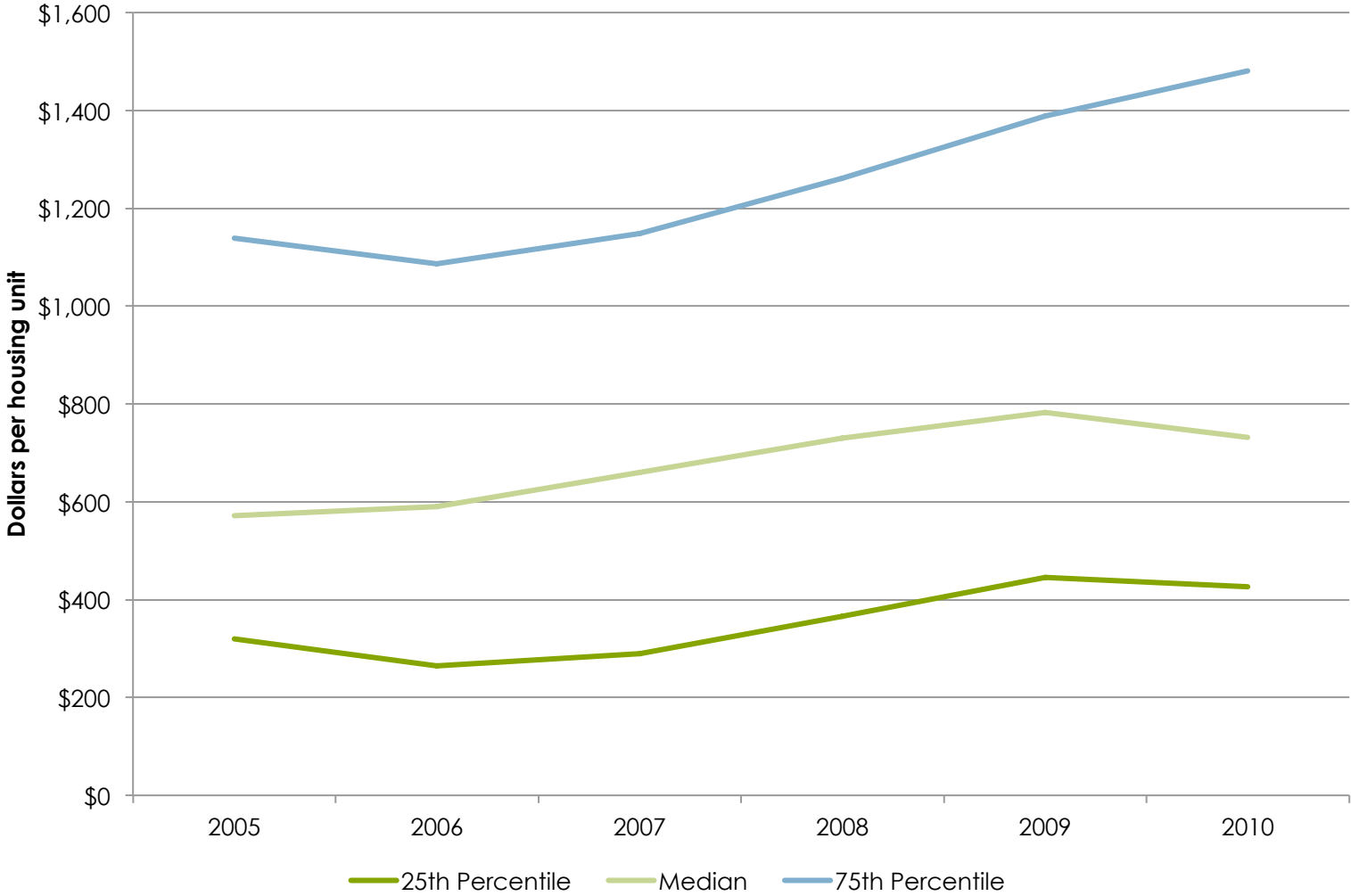




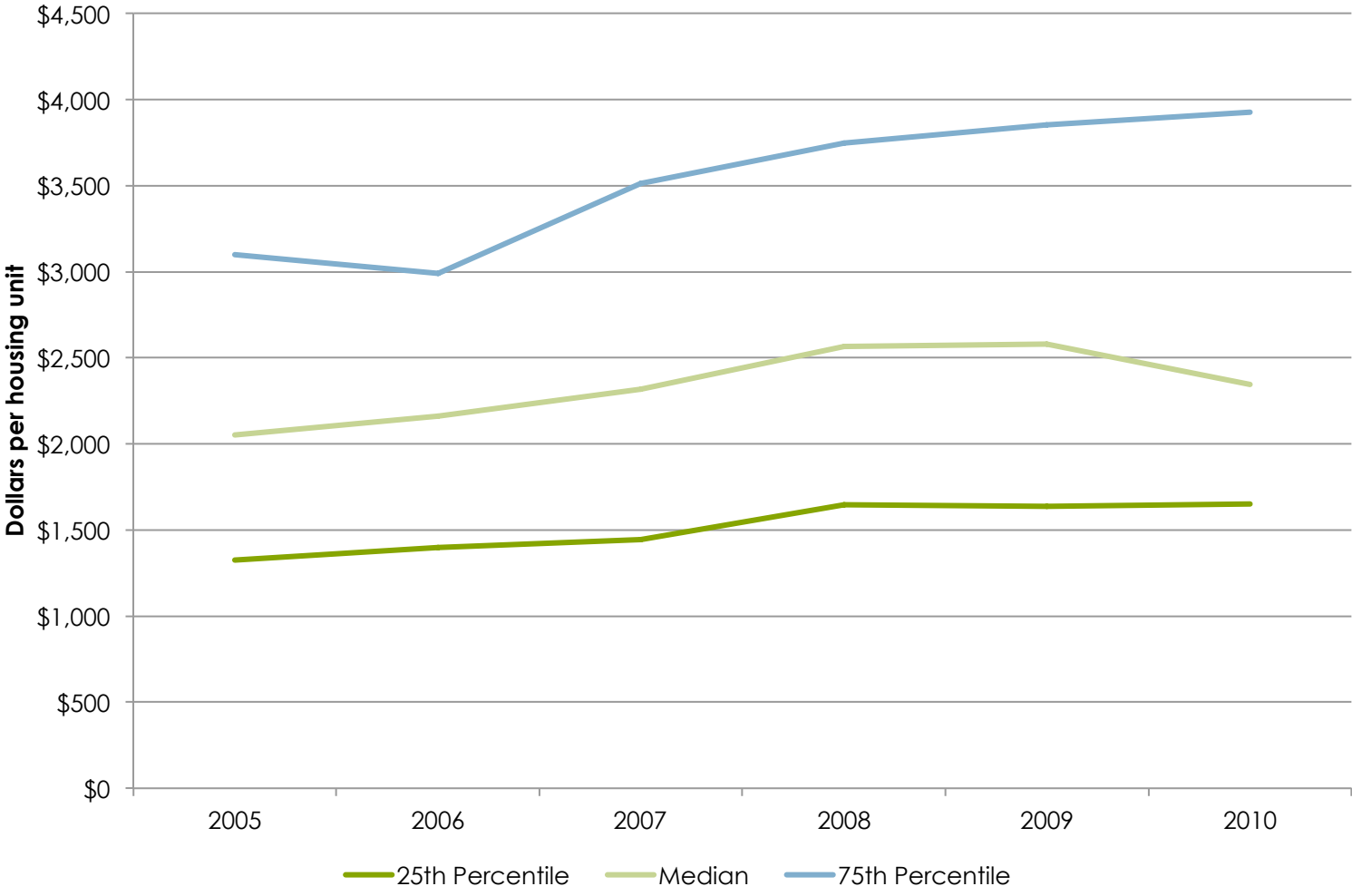
## Governmental Administration Expenditures per Housing Unit



# Utility Expenditures per Housing Unit



# Total expenditures per housing unit



Expenditure category	Percent change in median expenditures from 2007-2010	Percent of cities with 2% or greater	
		Reduction in expenditures	Increase in expenditures
Public Safety	+16.2%	38.6%	54.0%
Transportation	-11.1%	47.7%	49.5%
Parks & Recreation	-12.0%	45.0%	53.2%
Governmental Administration	+10.5%	35.5%	59.6%
Utilities	+10.8%	40.1%	56.2%
Interest on debt	+29.3%	60.2%	36.8%
Other	-12.4%	69.8%	26.2%
Total	+1.3%	61.3%	35.2%



Questions